



**NAVASOTA INDUSTRIAL SUPPLY**

**Solutions | SERVICE | Reliability**

**800-460-2442**  
**[www.nistx.com](http://www.nistx.com)**





## Lubricants for Industrial Applications

### ECOCOOL, ECOCUT



#### Metal Working Fluids

- Tube Mill Coolants
- CNC Cutting Fluids and Oils
- Roll Forming Fluids
- Long Sump Life
- Low Foaming
- Outstanding Lubricity
- Effective Corrosion Protection
- Tramp Oil Rejection

### RENOLIN, RENEP, PLANTO



#### Industrial Oils

- Industrial Grades
- Zinc and Ash Free Fluids
- Biodegradable Ester Based Fire Resistant Fluids
- Fully Synthetic (PAO & PAG)
- Highly Shear Stable Fluids
- Extreme Temperature Ranges
- Demulsification and Rapid Water Separation
- Improve Efficiency
- Save Energy

### RENOLIT, STABYL, GLEITMO



#### Industrial & Specialty Greases

- Multi-Purpose
- Multiple Complexes
- Multiple NLGI Grades
- Extreme Temperature Ranges
- Excellent Water & Chemical Resistance
- Extreme Pressure
- Anti-Wear & Corrosion Protection
- Excellent Pumpability
- Protection Against Shock Loading

### ANTICORIT, ANTICORIT PC



#### Corrosion Protection

- Oil Based
- Solvent Based
- Synthetic Based
- Various Protection Ranges
- Indoor/Outdoor Storage
- Short Drying Time
- Economical
- Pipe Coating
- Extremely Low VOC
- Fast Drying
- Excellent Adhesion

### LUBRODAL, FORGE EASE



#### Forging Compounds

- Water-Based Graphite
- Oil-Based Graphite
- Synthetic Compounds
- Excellent Die Coverage/ Film Formation over a Wide Temperature Range
- Improved Process Times by Reducing Wetting and Film Formation Times
- Water Dilutable for Economy of Operation
- Superior Release
- No Smoke or Flames

### RENOCLEAN



#### Industrial Cleaners

- General Purpose
- Floor Cleaners
- Neutral pH
- Compatibility
- Pleasant Odor
- Multi-Metal
- Positive Oil Emulsification
- Low Foaming



Founded in 1986, Navasota Industrial Supply (NIS) has grown to serve as a premier, worldwide supplier in carbide, carbide pellets, abrasives, and lubricants. Our tenacity to ensure your supply chain needs are covered is what separates our operation from competitors simply pursuing a purchase. We strive for efficiency and maximum savings with every solution and endeavor relating to your specific challenges.

# WELCOME



Today, NIS remains family owned and operated by our third-generation family—continuing a tradition of excellence instilled in our humble beginnings when it comes to unsurpassed customer service.



Inventory management is an area a lot of businesses overlook. NIS employs an expert team of professionals that can identify areas of concern in just about every operation and formulate solutions that will save money as well as increase productivity.

The products we stock are continuously evolving and remain at the forefront of industry innovations as new technologies launch. We are able to respond quickly to those changes by making sure you have the right information and training needed for optimum performance.

# INVENTORY & LOGISTICS IN A SINGLE SOURCE



**28,000 Square Foot Facility**  
**3 Acre Footprint**  
**Over 75,000 Products in Stock**  
**Online Customer Portal**  
**Delivery Fleet**

**ABRASIVES & FINISHING**

**ADHESIVES, SEALANTS & TAPES**

**CLAMPING & WORKHOLDING**

**CUTTING TOOLS SPARE PARTS & BLANKS**

**DEBURRING & BROACHING**

**FASTENERS**

**HAND TOOLS**

**HEALTH & SAFETY**

**HOLEMAKING**

**HYDRAULICS**

**JANITORIAL &  
SANITATION SUPPLIES**

**LUBRICATION**

**MACHINERY**

**MATERIAL HANDLING  
& STORAGE**

**MILLING**

**PAINT & EQUIPMENT**

**PNEUMATICS**

**POWER TOOLS**

**SHIPPING**

**TESTING, MEASURING  
& INSPECTION**

**THREADING**

**TOOLING SYSTEMS**

**TURNING**

**WELDING & SOLDERING**



**DORMER** **PRAMET** **PRECISION** **UNION BUTTERFIELD**

**Increase Efficiency & Productivity**  
with our  
multi-application  
cutting tool  
selection



www.dormerpramet.com

**DORMER PRAMET**

**American Excellence.**



**Dynaflex®**

World-famous Dynaflex®  
grinds corners and enters  
grooves. Finish and polish  
with belt slack or grind  
with platen pad.

Call for Demo



**Discover The  
Dynabrade Difference!**

dynabrade.com • 1-800-828-7333



**DEWALT**

SPECIFICATIONS	DWE43214N 4-1/2"-5" GRINDER	DWE43244N 5"-6" GRINDER	DWE43265N 5"-6" GRINDER	DWE43840CN 7" GRINDER
Motor	Brushless	Brushless	Brushless	Brushless
Amps	13.0	13.0	13.0	13.0
No Load Speed	10,500 RPM	9,000 RPM	9,000 RPM	8,000 RPM
Spindle Thread	5/8"-11	5/8"-11	5/8"-11	5/8"-11
Switch Type	Paddle	Paddle	Trigger	Trigger
E-Clutch®	Yes	Yes	Yes	Yes
Kickback Brake	Yes	Yes	Yes	Yes
Brake	Yes	Yes	Yes	Yes
Guards Included	5" Type 27	6" Type 27 6" Type 1	6" Type 27 5" Type 27	7" Type 27
Lanyard Ready™	Yes	Yes	Yes	Yes
Lock-On Trigger	No	No	No	No
Brake	2 Seconds or Less**	1 Second or Less*	1 Second or Less*	4 Seconds or Less†

**CORDED BRUSHLESS  
GRINDERS  
METALWORKING**



**1-800-4-DEWALT**

www.DEWALT.com



**SCOTCH-BRITE™  
DEBURR & FINISH PRO  
UNITIZED DISCS  
AND WHEELS**

**FINISH.**

**NOT EVERYONE LEAVES THEIR  
SIGNATURE WITH A PEN.**

Make your mark with the wheels that  
generations of craftsmen have chosen  
before you — Scotch-Brite™.



✓ UNCOMPROMISING  
QUALITY

✓ LASTS LONG,  
FINISHES STRONG

✓ REPEATABLE  
RESULTS







NIS goes beyond normal supplier expectations through an array of value-added services designed to keep our customers competitive. As special needs arise, NIS is quick to respond with solutions that improve the supply chain relationship.

Because every business is different and unique, NIS takes the time to understand the nuances inherent in each operation to better serve them. This may include the addition of a customized program specific to a company in order to save time, money and maximize performance.

We invite you to find out more about what Navasota Industrial Supply can do for you. Please contact us or email us at: [info@nistx.com](mailto:info@nistx.com).

# SERVICES THAT MATTER

***Integrations***  
***Technical Support***  
***Process Improvement***  
***Vending Solutions***  
***VMI (vendor managed inventory)***





**TAKE PROTECTION TO THE MAX**  
**HARD WORKING GEAR**

**MAX 36**  
MAX 3 MAX 6  
3X GREATER 6X GREATER

**NINJA**  
N9659KD Ninja FLT

**DM3**  
DM13378DC

**MCR SAFETY**  
UT2952 UltraTech

**We Protect People with Gloves, Glasses and Garments.**

MAX36™ lenses are dual coated.  
• MAX3™ Anti-Scratch Coating on the outside for protection from scratches.  
• MAX6™ Anti-Fog Coating on the inside for fog free visibility.

MCR Safety has gloves engineered to provide the highest level of innovation and incorporating the latest in hand protection technology.

**MBT**  
MELTBLOWN TECHNOLOGIES

Spill Control Specialists You Can Trust

### Universal Absorbents

Use universal absorbents to cleanup oils, coolants, solvents and water-based fluids anywhere in your facility. Use gray industrial absorbents around machinery, under leaky pipes or fittings, in messy traffic areas, for general maintenance projects—they are your first choice for indoor spill control. Plus, their gray color masks spills and stains, helping you resist the urge to pick up the absorbent before it is fully saturated.

### Oil-Only Absorbents

MBT standard oil only sorbents are typically used to skim oil off of water. The open fiber construction draws hydrocarbon-based fluids into the center of the pads and/or rolls, while repelling water. This type of media is our most economical family of pads and rolls, yet it absorbs quicker and more than the other product families.

• Selectively absorbs oil, repels water and is ideal for outdoor use

**www.meltblowntechnologies.com**

**LENOX**

**Band Saw Blades**

**YOU CUT STEEL  
WE CUT COSTS**

- Maximize Machine Uptime
- Eliminate Bottlenecks and waste
- Optimize Your Total Sawing System
- Develop New Operator Skills
- Practice Safe Sawing

**StanleyBlack&Decker**



**Intellichem LLC** Specializing in: **Made in the U.S.A**

- Quality
- Innovation
- Satisfaction
- Customer Solutions
- Forging Lubricants(Graphite/Non Graphite)
- High Performance Industrial Coatings
  - Oil Based Graphite Dispersions
  - Conductive Graphite Coatings
  - Colloidal Dispersions

**Intellichem**

Phone: 810.765.4075 Website: Intelli-Chem.com

**RUST-OLEUM**  
**ONE BRAND. THOUSANDS OF SOLUTIONS.**  
\*\*\* MORE THAN JUST SPRAY PAINT \*\*\*

<b>FLOORING</b> Surface Prep • Line Striping • Floor Coatings & Paints Floor Patch & Repair • Stairs/Decks • Anti-Slip	<b>CONCRETE PATCH &amp; REPAIR</b> Concrete Patch & Repair • Anti-Slip Solutions Vertical & Horizontal Cracks • Pot Holes	<b>MARKING PAINT</b> Utility • Construction • Excavation Surveying • Landscape • Golf Course Markings
<b>SURFACE COATINGS</b> Walls • Ceilings • Building Exteriors • Equipment Protective • Durable • Fast Drying • Easy to Apply	<b>SAFETY</b> Concrete Patch & Repair • Line Striping • Handrails Anti-Slip Solutions • Safety Color Coding	<b>CLEANING &amp; PROJECT PREP</b> General Maintenance Cleaning & Degreasing Surface Prep for Projects





NAVASOTA INDUSTRIAL SUPPLY IS AN AUTHORIZED DISTRIBUTOR FOR SECO TOOLS

## EXPECT MORE FROM YOUR CUTTING TOOLS

INDEXABLE MILLING | TURNING | SOLID END MILLING  
HOLEMAKING | THREADING | TOOLING SYSTEMS

1.800.TEC.TEAM  
TECHNICAL SUPPORT

SECOTOOLS.COM

**SECO**

## EXTEND TOOL LIFE, PERFORMANCE AND RELIABILITY IN YOUR MOST DEMANDING **OIL & GAS** OPERATIONS WITH SECO TOOLING.

We offer a wide range of innovative tools and solutions that allow for the secure, productive processing of heavy parts, castings and forgings. We optimize our heavy machining products so you have the means to tackle any machining challenge that stands in your way. Now it's time to thrive in operations such as deeper-wider grooving, scarfing, bar peeling, pipe milling, large slitting, beveling and chamfering.

### THREAD CHASERS/HOLDERS

Heavy-duty pocket with carbide pins to hold insert in securely for tight tolerance when precision gauging of thread form for components like oil pipe and couplings.

### DURATOMIC® INSERTS

TP3501 grade for demanding operations and unpredictable working conditions.

### STEADYLINE® PASSIVE DYNAMIC DAMPING BARS

Overcome tool overhang challenges up to 10xD where vibration is often an issue.

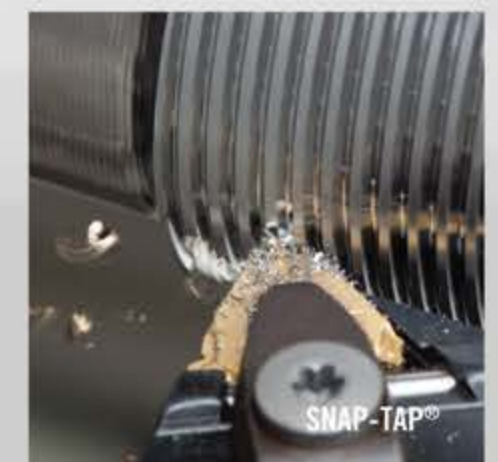
### SNAP-TAP® THREAD INSERTS/HOLDERS

Precision cutting edges eliminate the need for secondary grinding or honing operations. Holders feature an anti-twist insert locking system.

### NIAGARA CUTTER™ STABILIZER™ 2.0 SOLID END MILLS

Unique continuously variable asymmetrical geometry helps create a smooth chatter free milling condition at extreme feed rates.

**SECO**







Located northwest of Houston, Texas, we are responsive to the industries within the region. No matter what size operation you have, NIS is committed to your success. We have the ability to serve large petroleum and industrial customers, as well as smaller welding, manufacturing, and machine shops, with an unsurpassed level of know-how and customer satisfaction. Businesses of all sizes can count on our ability to deliver what's needed accurately and on time.

Due to our logistical expertise and operational processes, NIS goes beyond regional customers and serves a thriving global market with the same tenacity. We're able to leverage competitive pricing with the most reliable brands to deliver supply chain excellence.

# WHO WE SERVE



800-460-2442 • [www.nistx.com](http://www.nistx.com)



## BIG TOOLS for big jobs



To accurately center rolls, drill pipe and other workpieces weighing many tons, you need roll class rigidity with gage class tolerances. Only Riten can supply you live centers for loads up to 200,000 lbs. with guaranteed accuracy of  $\pm .0002$ . Plus bell head, live and dead chuck mandrels, bore drivers, and other custom designed workholding products.

**Riten**

Solutions, not excuses  
[www.riten.com](http://www.riten.com)

For big machining jobs, count on the industry experts. Call us at 800-338-0027.

## SBX ONE

A NEXT GENERATION BLADE  
FOR STRUCTURAL STEEL



SBX ONE

- QUIETER
- FASTER
- MORE POWERFUL
- INCREASED DURABILITY
- SMOOTHER SURFACE FINISH
- PINCH RESISTANT

THE PROFESSIONALS' EDGE™  
SBX-ONE.COM

**SIMONDS**

## THE MOST VALUED PRODUCTIVITY SOLUTIONS IN THE WORLD



**Snap-on** INDUSTRIAL BRANDS

**WILLIAMS**

**BAHCO**

**CDI TORQUE**  
PRODUCTS



Up.  
Down.  
Left.  
Right.



Modern turning works in  
any direction.

PrimeTurning™ and Y-axis parting are new turning methods revolutionizing the industry. By making use of the opportunities provided by modern CNC machines and challenging conventional machining directions, gains in productivity and tool life can reach levels never seen before.

Find out where these innovations will lead you.



#turningreinvented  
[www.sandvik.coromant.com/turningreinvented](http://www.sandvik.coromant.com/turningreinvented)

Y-axis parting with CoroCut® QD

**SANDVIK**  
Coromant



## ABRASIVES

3M  
Carborundum  
CGW- Camel Grinding Wheel  
Cratex  
Dewalt  
Merit  
Radiac Abrasives  
Tyrolit  
United Abrasives  
VSM  
Weiler

## ABSORBANTS

Balcones Minerals Corp.  
C.E.P.  
Meltblown Technologies  
Oil-Dri

## BANDSAW BLADES

Amada  
Lenox  
Roentgen  
Starrett  
Simonds

## CARBIDE TOOLING PRODUCTS

SECO  
Ceratzit  
P.H. Horn  
Spec Tool  
Sumitomo  
Tool-Flo  
Toolmex

Regal-Beloit  
Reiff & Nestor  
Union Butterfield  
YG-1

## FASTENERS

Brighton Best  
Holo-Crome(Allen)  
Standard Fastners

## LUBRICANTS, COOLANTS & FORGING

CRC  
Exxon/Mobil  
Fuchs  
Henkel

Yuasa  
Kalamazoo  
Riten  
Roofe  
Shop Tools  
Techniks  
Toolmex  
WTO Workholding  
YG-1

## PRECISION & INSPECTION TOOLS

Allen Gauge  
Brown & Sharpe  
Fowler  
Gage Maker  
Insize  
Magnaflux

## PNEUMATIC TOOLS

Chicago Pneumatic  
Dynabrade  
Eagle Industries  
Florida Pneumatic  
Ingersoll Rand  
T.C. Service (Top Cat)

## PAPER GOODS & JANITORIAL PAINT

Krylon  
Industrial Enamels  
PPG  
Rust-Oleum  
STRAPPING  
Steel & Poly

## SHOP SUPPLIES

Airmaster Fan Inc.  
Bondhus  
StrongHold Products  
TPI Corporation

## STENCILING & MARKING SUPPLIES

C.H. Hanson  
Diagraph msp  
Durable Technologies  
Laco/Markal  
Meeco Marking Systems  
Nissen  
SIC Marking  
Young Brothers

# BRANDS THAT PERFORM

## AIR / HYDRAULIC HOSES & FITTINGS

Coilhose  
Dayton  
Milton

## AIR TOOLS

3M  
Dynabrade  
Florida Pnematic  
Jet Equipment & Tools  
Simonds  
Universal Tool

## ANCHORS

Simpson Strong Tie

## CHUCKS & CHUCK JAWS

Bison  
Buck Forkardt  
Jacobs  
Jergens  
Kalamazoo Chuck  
Royal Products  
SMW  
SMW Autoblok

## CUTTING TOOLS

Consolidated Toledo Drill  
Dormer  
IMCO  
Nachi  
Niagara  
Pramet  
Precision Twist Drill

Intellichem  
Kool Mist  
LPS  
WD-40

## MACHINE TOOLS, EQUIPMENT & ACCESSORIES

Bison Chucks  
Darex  
Dorian  
Everett Saw  
Grinding & Polishing Corp.  
H & R Manufacturing  
Jergens  
Jet  
Kitagawa  
Rohm  
SMW – Chucks  
Parlec

NIS has established partnerships with the most reliable manufacturers in their respective industries. We work hard to ensure the success of our valued customer base. We stand behind the products we provide and encourage customers to inquire about innovations that better support your operational initiatives.

Mitutoyo  
Phase II  
Starrett  
S.P.I.

## MATERIAL HANDLING EQUIPMENT

Bishop Lifting Products  
Equipto  
LiftAll  
Lift Rite – Pallet Jacks  
MECO Modern Equipment  
Morse-Drum Handling Equip.

## SAFETY SUPPLIES

3M  
Ansell  
Best  
Gatorade  
MAPA  
MCR  
PIP  
Radnor  
Sqwincher

## TAPES

3M  
Shurtape

## WELDING

Inweld



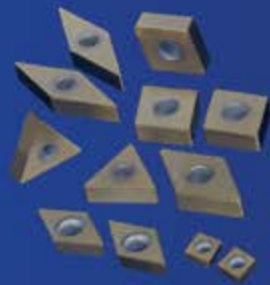


**CARBIDE - CBN - DIAMOND**  
High Performance Cutting Tools

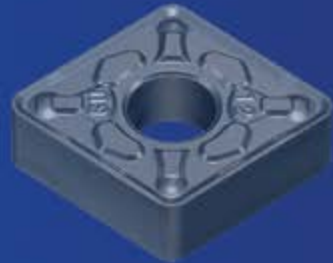
SUMITOMO  
ELECTRIC  
GROUP

## CONNECT WITH INNOVATION

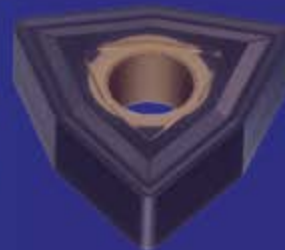
For 40 years in the U.S., we've made it our mission to design and produce innovative cutting tool solutions. Our aggressive R&D ingenuity offers the best choices in turning, drilling, milling and PCBN & PCD inserts. Every Sumitomo solution is developed to meet needs for higher productivity and precision. Whether your application is in Oil & Gas, Construction, Automotive or Aerospace: Sumitomo has a solution for you!



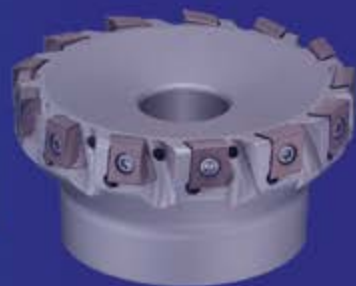
# CBN & PCD



# TURNING



# MILLING



# DRILLING



www.sumicarbide.com  
800-950-5202



## Rough grinding wheel Z-FORCE for steel

The PREMIUM\*\*\* Z-Force is a high-performance zirconium rough grinding wheel for surface and edge grinding. It is distinguished by its excellent lifetime. The 1/4" thick Z-FORCE rough grinding wheels offer enhanced dimensional stability for welding and root welding.

- + High stock removal rate
- + High economic efficiency
- + Environmentally-friendly



844.897.6548  
www.tyrolit.com | www.radiac.com



# Starrett®

The Authority on Accuracy.

PRECISION MAKES  
THE DIFFERENCE



# FASTER SAFER BETTER

People who take work seriously use Weiler products. You want solutions to get the job done. Superior performance means maximum aggression and long life. Save more time. Be more productive. Be more profitable. That's the Weiler difference.



©2018 Weiler Abrasives Group. All Rights Reserved.



# DIAGRAPH SINCE 1893

MAKE THE PERFECT MARK

RELIABILITY. PARTNERSHIP. SIMPLICITY.

inks.



markers.



stenciling.



CALL  
800.460.2442

CLICK  
[www.nistx.com](http://www.nistx.com)

EMAIL  
[info@nistx.com](mailto:info@nistx.com)



9527 FM 379 • Navasota, TX 77868

800-460-2442 • [www.nistx.com](http://www.nistx.com)



PROBLEMS

**MILLING**

DRILLING

REAMING

DEBURRING

COUNTERSINKING

CHAMFERING

ROUTING

ENGRAVING

SPOTTING

BORING

ÂLPHA



ÂTOMIC



ÂTTACKER



ÂVALANCHE



ÂGGRESSOR



SOLUTIONS.



SALES@MONSTERTOOL.COM  
MONSTERTOOL.COM





## CREDIT AGREEMENT

### Business Information

Business Name \_\_\_\_\_ Phone \_\_\_\_\_

Bill to Address \_\_\_\_\_

Ship to Address \_\_\_\_\_

Federal ID # \_\_\_\_\_ Business Since \_\_\_\_\_ Dun & Bradstreet # \_\_\_\_\_

Type of Business Corporation \_\_\_\_\_ Proprietorship \_\_\_\_\_ Partnership \_\_\_\_\_

### Business Bank References

Name of Bank \_\_\_\_\_ Phone: \_\_\_\_\_ Contact \_\_\_\_\_

City \_\_\_\_\_ State \_\_\_\_\_ Credit Line \_\_\_\_ Yes \_\_\_\_ No

### Vendor Reference

Name of Vendor \_\_\_\_\_ Phone: \_\_\_\_\_

Email: \_\_\_\_\_

Name of Vendor \_\_\_\_\_ Phone: \_\_\_\_\_

Email: \_\_\_\_\_

Name of Vendor \_\_\_\_\_ Phone: \_\_\_\_\_

Email: \_\_\_\_\_

Terms of Sale and Credit Agreement

**OPEN ACCOUNT TERMS:** Net 30 Days from date of Invoice.

***\*Please note that Navasota Industrial Supply will charge the appropriate amount of sales tax if the attached Resale Certificate is not completed.***

### CONFIRMATION OF INFORMATION ACCURACY AND RELEASE OF AUTHORITY TO VERIFY:

The undersigned, for the purpose of procuring and establishing credit from time to time with Supplier and to induce Supplier to Permit Applicant to become indebted to Supplier for purchase of goods, materials and/or services, furnishes the above business and personal credit information. The undersigned, jointly and individually, certifies that all information in this Application is complete, factually correct, and understands the Supplier will rely on the accuracy of this information for any credit that may be extended Supplier is hereby expressly authorized to contact any parties listed herein and any other sources and to verify any information contained in this Application. The undersigned hereby waives any privacy of credit information rights or regulations, and is informed that although an application is accepted by the Supplier, this does not constitute acceptance and issuance of credit to the Applicant. The Applicant is also aware that they are personally liable for any or all collection fees, including reasonable attorney's fees, that may occur during the business relationship between the Supplier. If any representations made on the Application prove to be untrue, the undersigned agrees that all obligations of Applicant, whether discovered now or in the future, shall immediately become due and fully payable without demand or notice. The undersigned hereby acknowledges receipt of a copy of this Application.

\_\_\_\_\_  
Authorized Signature /Print Name/Title

\_\_\_\_\_  
Date

PO Box 1487  
Navasota, TX 77868  
936.825.7368





***NIS is going paperless! Please provide an email address where all invoices can be sent!***

Please complete this form and email to AR@NISTX.com. Providing correct information is vital to a successful relationship!

(A current Texas Sales and Use Tax Resale Certificate is required if your company is not taxable.

Without the form NIS will charge the appropriate amount of sales tax on each purchase.)

Company Name: \_\_\_\_\_

Mailing Address: \_\_\_\_\_

City, State, Zip: \_\_\_\_\_

Phone: \_\_\_\_\_ Email: \_\_\_\_\_

Email Address for Invoices: \_\_\_\_\_

Accounts Payable Contact: \_\_\_\_\_

Accounting Supervisor: \_\_\_\_\_

Direct Line/Ext: \_\_\_\_\_

Direct Line/Ext: \_\_\_\_\_

Email: \_\_\_\_\_

Email: \_\_\_\_\_

Do You Require PO's: Yes \_\_\_\_\_ No \_\_\_\_\_

Does your company qualify for tax exemption? Yes \_\_\_\_\_ No \_\_\_\_\_

Tax Exempt # \_\_\_\_\_ Federal ID # \_\_\_\_\_

(Please send copy of tax certificate)

Shipping Address: \_\_\_\_\_

City, State, Zip: \_\_\_\_\_

Phone: \_\_\_\_\_ Email: \_\_\_\_\_

Preferred shipping method: \_\_\_\_\_

Is your shipping address located inside the city limits? Yes \_\_\_\_\_ No \_\_\_\_\_

\_\_\_\_\_  
Signature and Title

\_\_\_\_\_  
Date

Navasota Industrial Supply, Ltd.

9527 FM 379

PO Box 1487

Navasota, TX 77868

Phone: 936.825.7368